

Legend:

- Drain Flow
- Study Corridor
- Oil Pipeline
- Natural Gas Pipeline

N

0 1,000 2,000
US Feet

HIDALGO COUNTY
WILLACY COUNTY

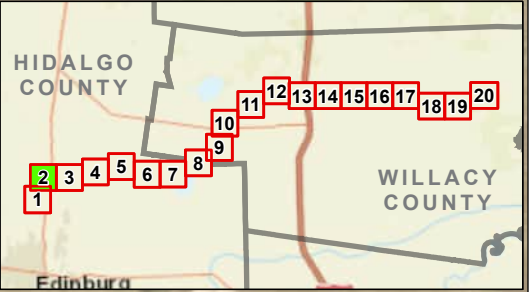
TX

Exhibit 16
Alternative 2 Oil & Gas
Wells and Pipeline Map
Sheet 1 of 20
Raymondville Drain Project

Author : Joel F. Aguirre Updated : 10/5/2023

DISCLAIMER: RRP Consulting Engineers makes no guarantees as to the accuracy of data used in the construction of this map.

Path: S:\project\4408000_Prop\Inventory\GIS\PDF_Export\Exh16_Series.aprx



Legend:

- Drain Flow
- Study Corridor
- Oil Pipeline
- Natural Gas Pipeline
- Inactive Oil/ Gas Well
- Dry Hole Well
- Proposed Detention Basin

N

0 1,000 2,000
US Feet

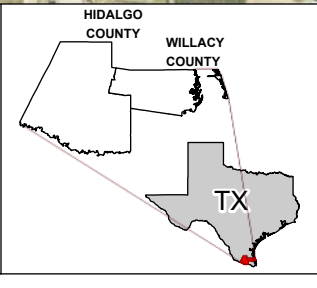
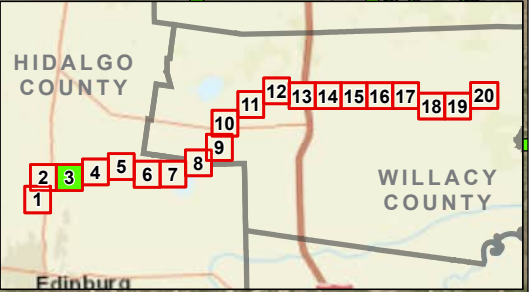
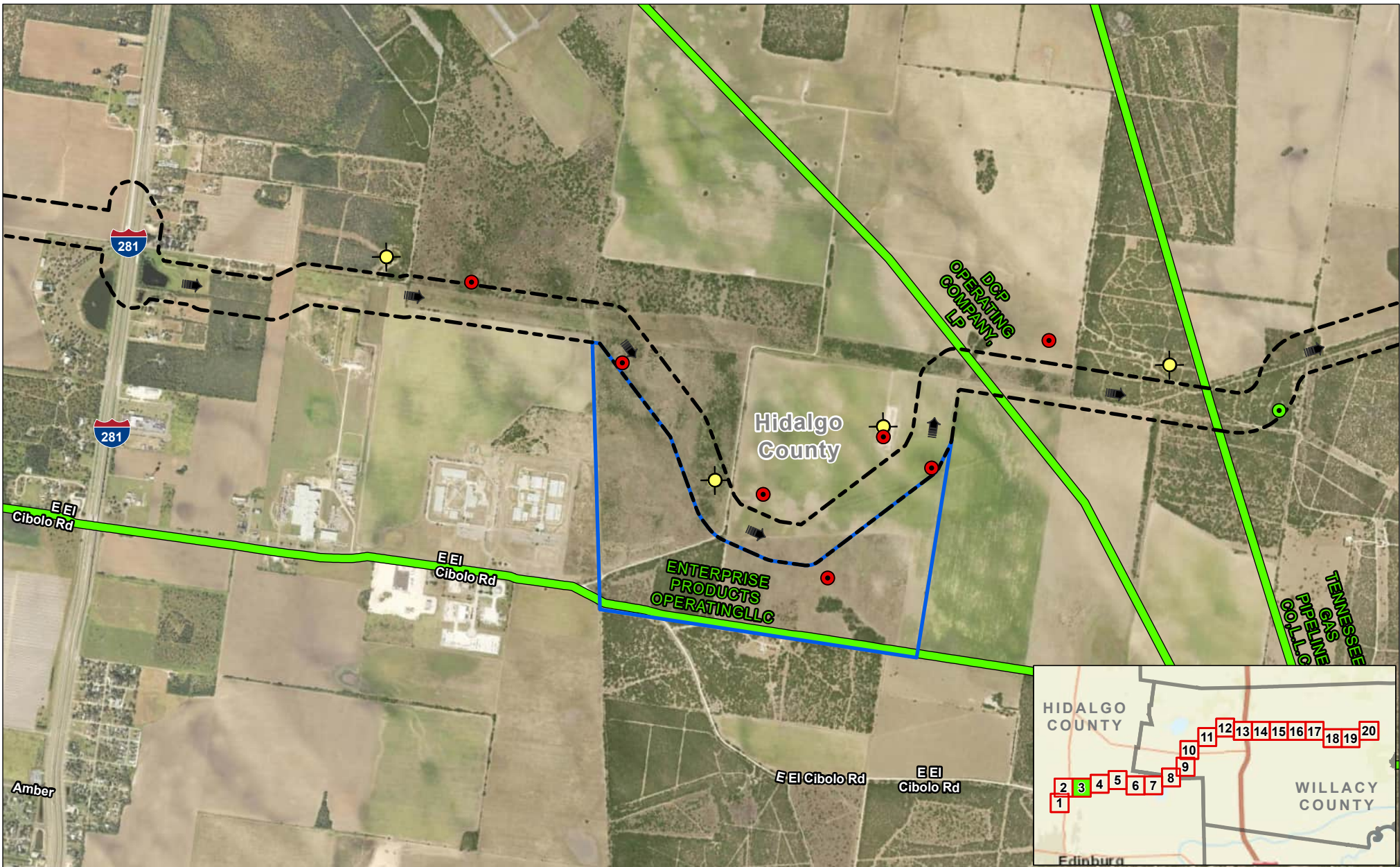


Exhibit 16 Alternative 2 Oil & Gas Wells and Pipeline Map Sheet 2 of 20 Raymondville Drain Project

Author : Joel F. Aguirre Updated : 10/5/2023

DISCLAIMER: RRP Consulting Engineers makes no guarantees as to the accuracy of data used in the construction of this map.

Path: S:\project\4408000_ProposedRaymondvilleDrain\Drawings\Drawings.dwg



Legend:

- Drain Flow
- Study Corridor
- Natural Gas Pipeline
- Active Oil/Gas Well
- Inactive Oil/Gas Well
- Dry Hole Well
- Proposed Detention

N

0 1,000 2,000

US Feet

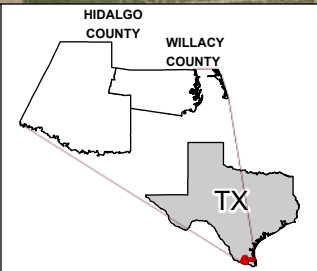


Exhibit 16

Alternative 2 Oil & Gas Wells and Pipeline Map

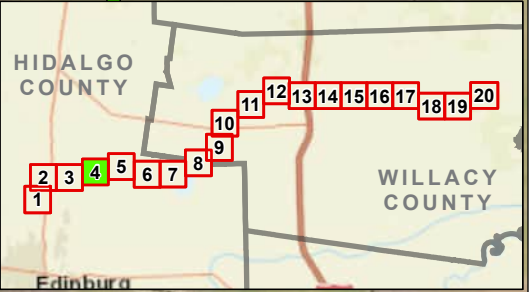
Sheet 3 of 20

Raymondville Drain Project

Author : Joel F. Aguirre Updated : 10/5/2023

DISCLAIMER: RRP Consulting Engineers makes no guarantees as to the accuracy of data used in the construction of this map.

Path: S:\projects\4408000_ProposedRaymondvilleDrain\Drawings\Exhibit_16_Sheet_3.aprx



Legend:

Drain Flow	Active Oil/Gas Well
Study Corridor	Inactive Oil/Gas Well
Natural Gas Pipeline	Dry Hole Well
	Proposed Detention

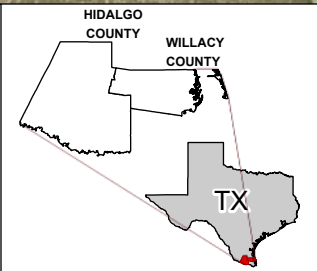
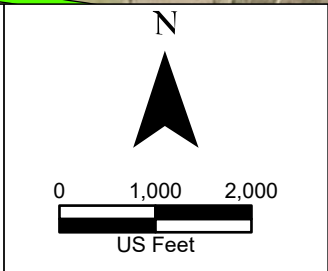
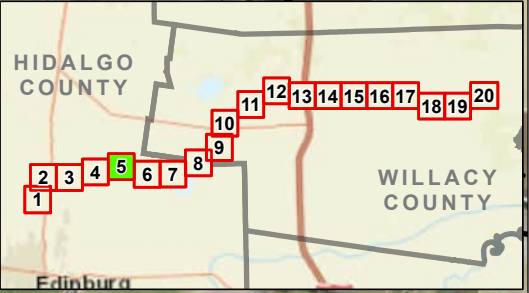


Exhibit 16
Alternative 2 Oil & Gas Wells and Pipeline Map
Sheet 4 of 20
Raymondville Drain Project

Author : Joel F. Aguirre Updated : 10/5/2023

DISCLAIMER: RRP Consulting Engineers makes no guarantees as to the accuracy of data used in the construction of this map.



Legend:

- Drain Flow
- Study Corridor
- Natural Gas Pipeline
- Inactive Oil/ Gas Well

N

0 1,000 2,000

US Feet

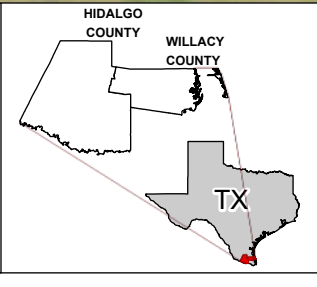
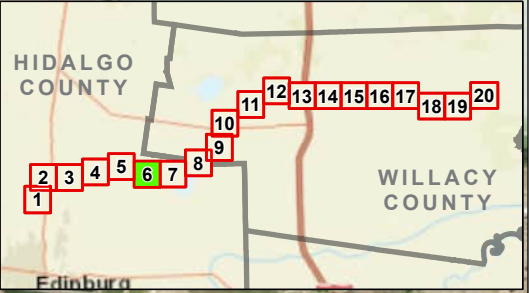


Exhibit 16
Alternative 2 Oil & Gas
Wells and Pipeline Map
Sheet 5 of 20
Raymondville Drain Project



Author : Joel F. Aguirre Updated : 10/5/2023

DISCLAIMER: RRP Consulting Engineers makes no guarantees as to the accuracy of data used in the construction of this map.


Path: S:\project\4408000_Pipeline\Raymondville\GIS\PDF_Export\Exh_16_Sheet_5.apx



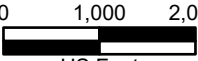
Legend:

-  Drain Flow
-  Study Corridor

N



0 1,000 2,000



US Feet

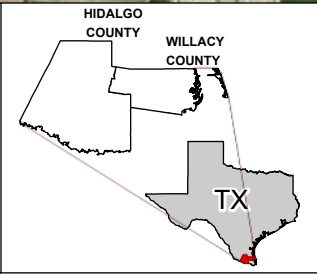


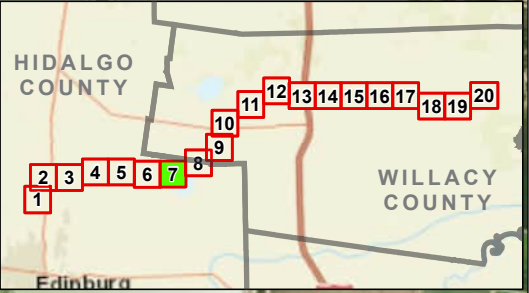


Exhibit 16
Alternative 2 Oil & Gas
Wells and Pipeline Map
Sheet 6 of 20
Raymondville Drain Project

Author : Joel F. Aguirre	Updated : 10/5/2023
---------------------------------	----------------------------

DISCLAIMER: RRP Consulting Engineers makes no guarantees as to the accuracy of data used in the construction of this map.

Path: S:\project\440800_Pipeline\Raymondville\GIS\PDF_Export\Exhibit_Series.aprx



Legend:

- Study Corridor
- Drain Flow
- County Boundary

N

0 1,000 2,000

US Feet

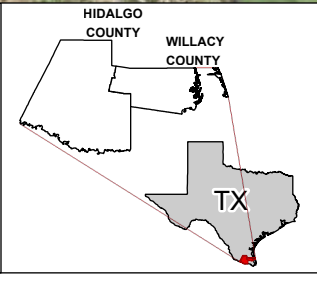
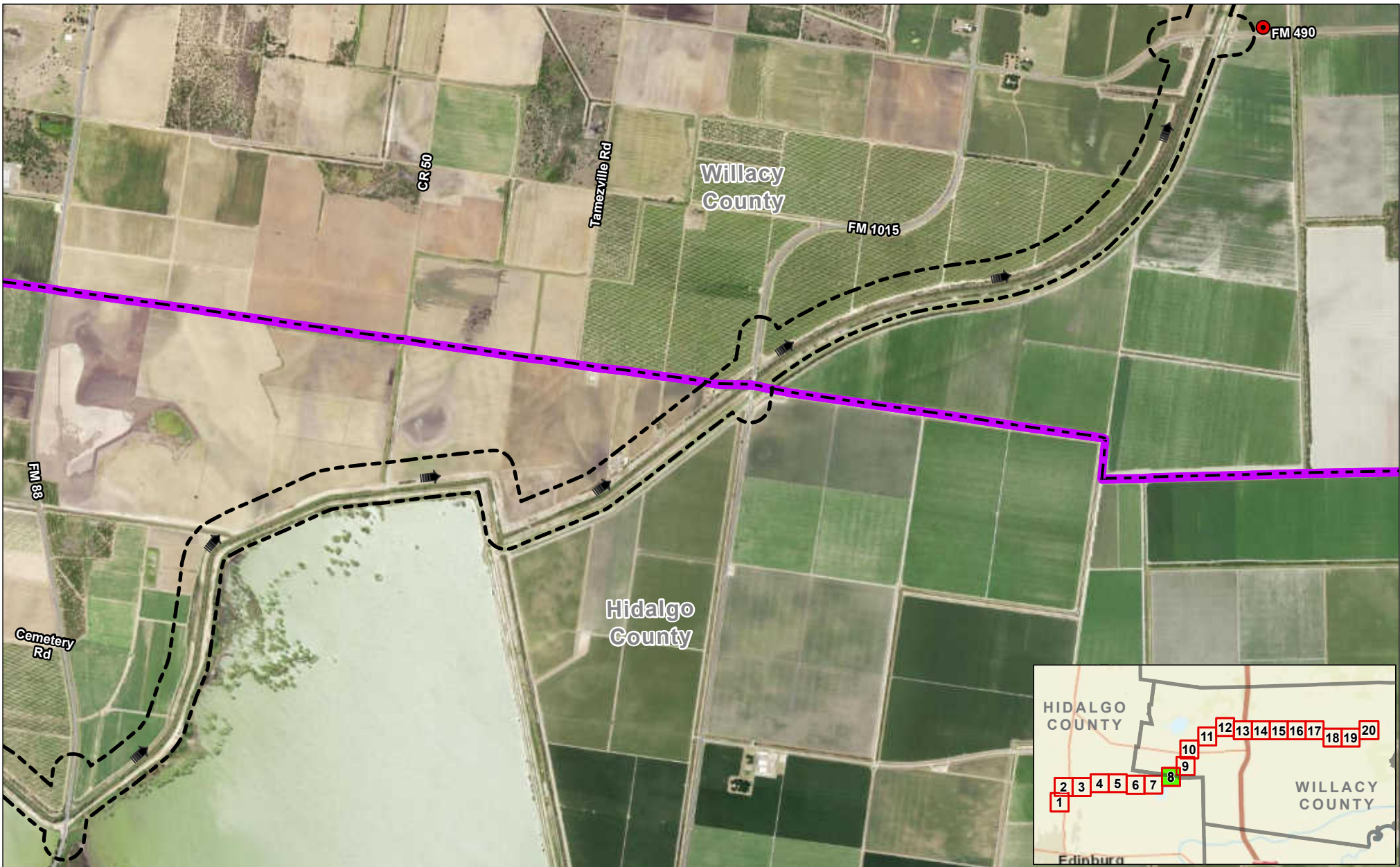


Exhibit 16 Alternative 2 Oil & Gas Wells and Pipeline Map Sheet 7 of 20 Raymondville Drain Project

Author : Joel F. Aguirre	Updated : 12/14/2023
DISCLAIMER: RRP Consulting Engineers makes no guarantees as to the accuracy of data used in the construction of this map.	

Path: S:\projects\4408000_Pipeline\Raymondville\GIS\PDF_Export\Exhibit_16_Series.aprx



- Legend:**
- Study Corridor
 - Inactive Oil/Gas Well
 - County Boundary

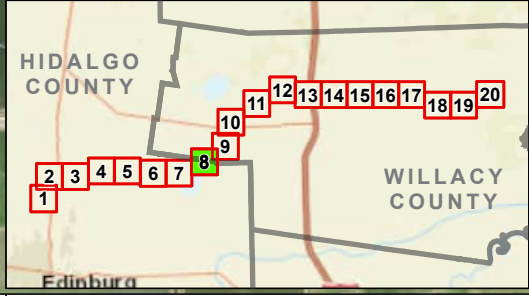
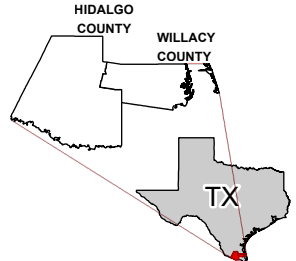
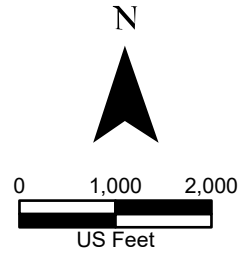
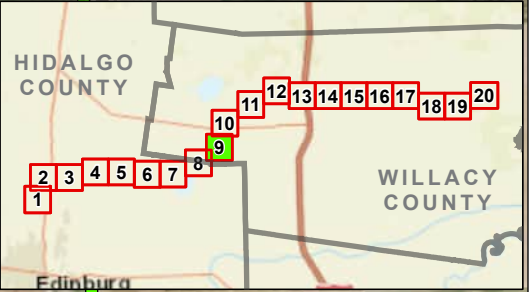
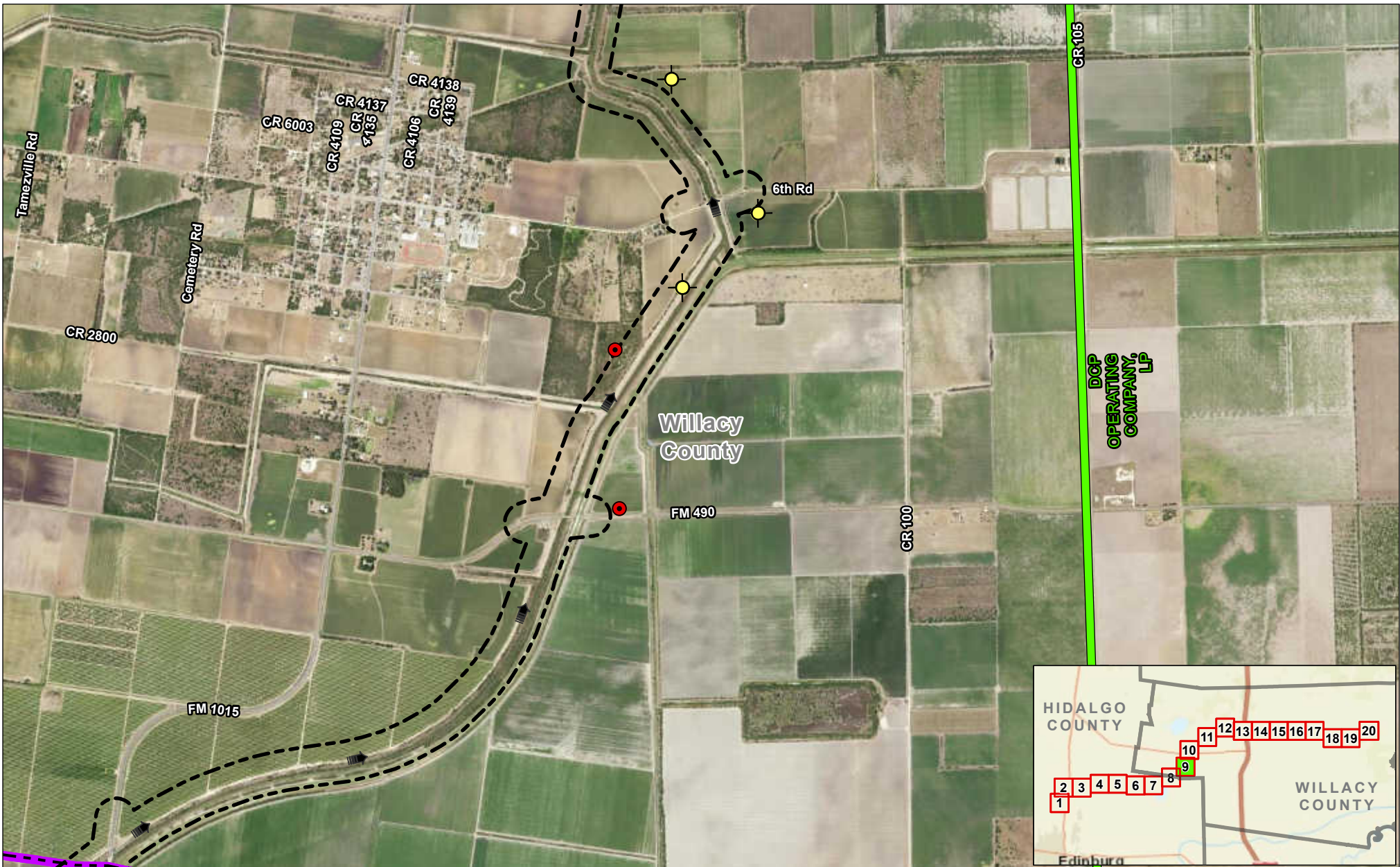


Exhibit 16
Alternative 2 Oil & Gas
Wells and Pipeline Map
Sheet 8 of 20
Raymondville Drain Project

Author : Joel F. Aguirre Updated : 12/14/2023

DISCLAIMER: RRP Consulting Engineers makes no guarantees as to the accuracy of data used in the construction of this map.



Legend:

- Study Corridor
- Drain Flow
- County Boundary
- Natural Gas Pipeline
- Inactive Oil/Gas Well
- Dry Hole Well

N

0 1,000 2,000

US Feet

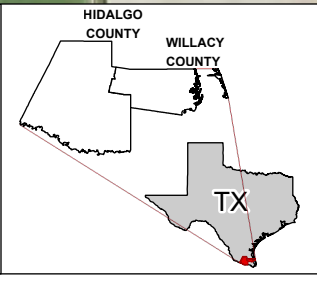


Exhibit 16

Alternative 2 Oil & Gas Wells and Pipeline Map

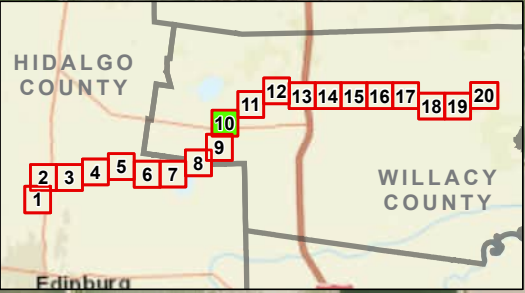
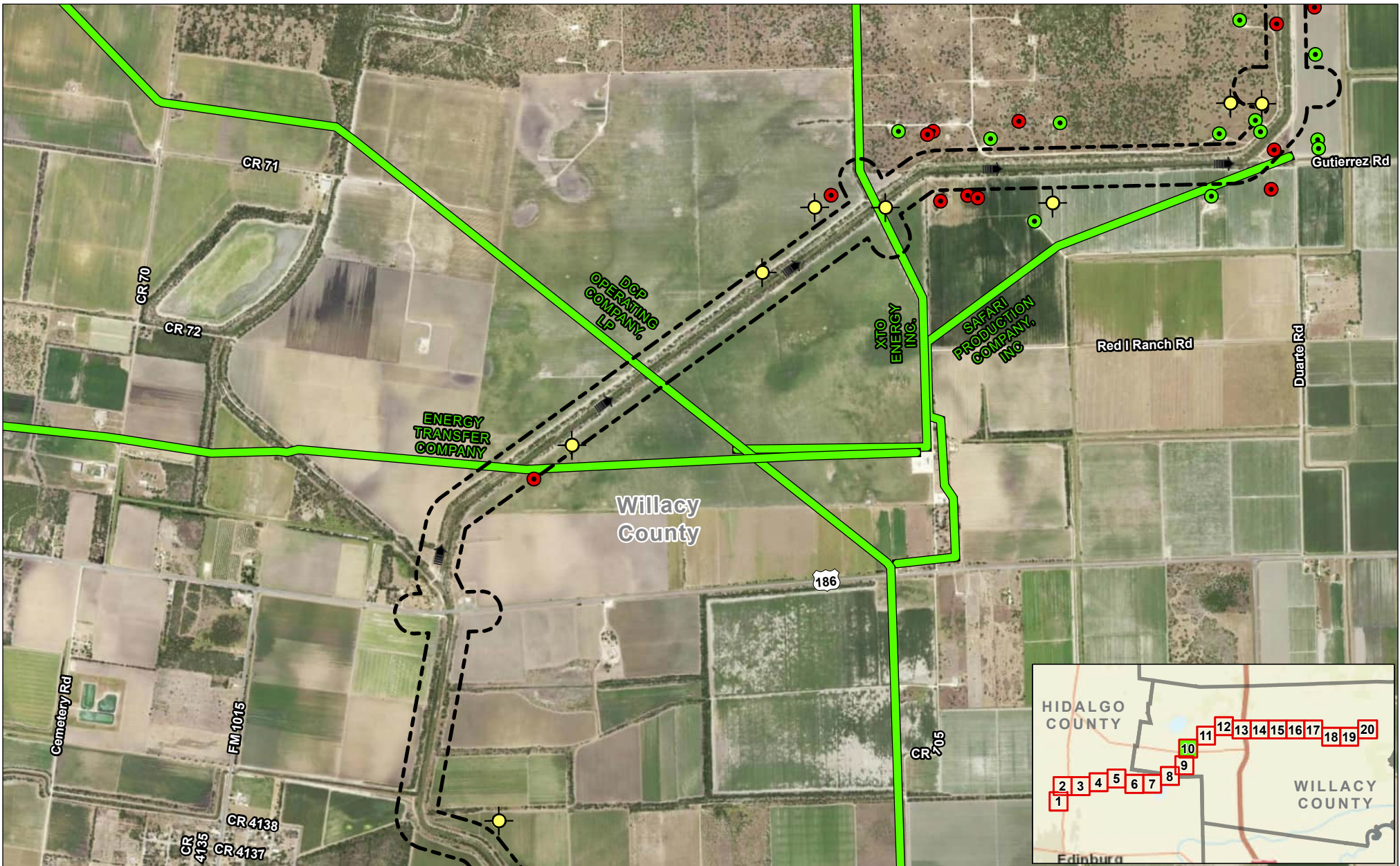
Sheet 9 of 20

Raymondville Drain Project

Author : Joel F. Aguirre	Updated : 12/14/2023
--------------------------	----------------------

DISCLAIMER: RRP Consulting Engineers makes no guarantees as to the accuracy of data used in the construction of this map.

Path: S:\projects\4408000_ProposedRaymondvilleDrain\Drawings\Drawings\Sheet_9.dwg



Legend:

- Drain Flow
- Study Corridor
- Natural Gas Pipeline
- Active Oil/Gas Well
- Inactive Oil/Gas Well
- Dry Hole Well

N

0 1,000 2,000

US Feet

HIDALGO COUNTY
WILLACY COUNTY

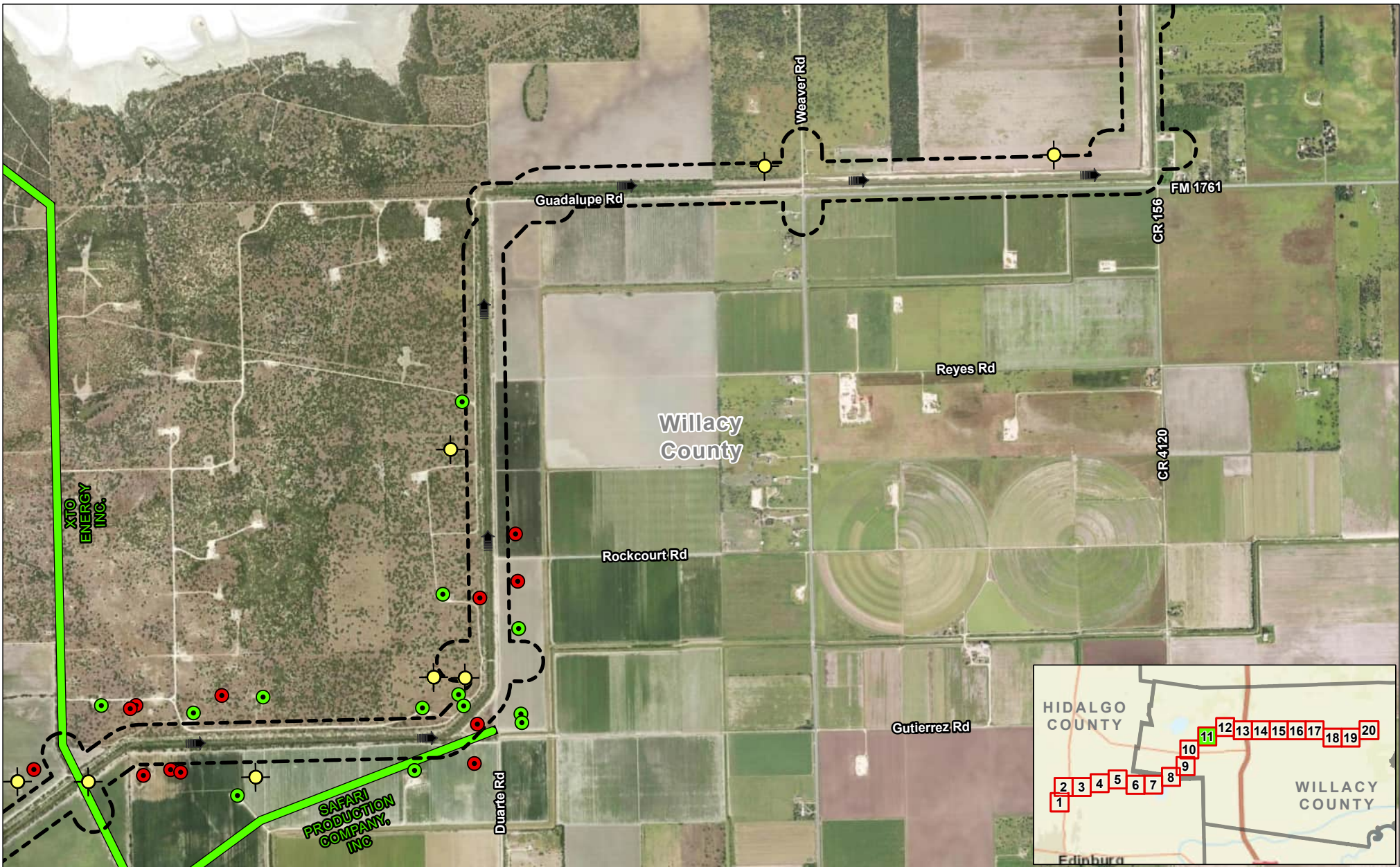
TX

Exhibit 16
Alternative 2 Oil & Gas
Wells and Pipeline Map
Sheet 10 of 20
Raymondville Drain Project

Author : Joel F. Aguirre Updated : 10/5/2023

DISCLAIMER: RRP Consulting Engineers makes no guarantees as to the accuracy of data used in the construction of this map.

Path: S:\projects\4408000_ProposedRaymondvilleDrain\GIS\Map_Export\Exhibit_16_Sheet_10.aprx



- Legend:**
- Drain Flow
 - Study Corridor
 - Natural Gas Pipeline
 - Active Oil/Gas Well
 - Inactive Oil/Gas Well
 - Dry Hole Well

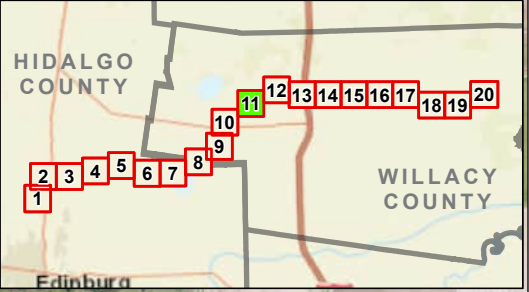
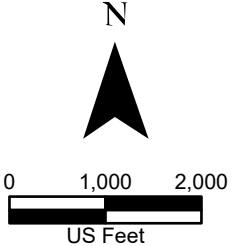
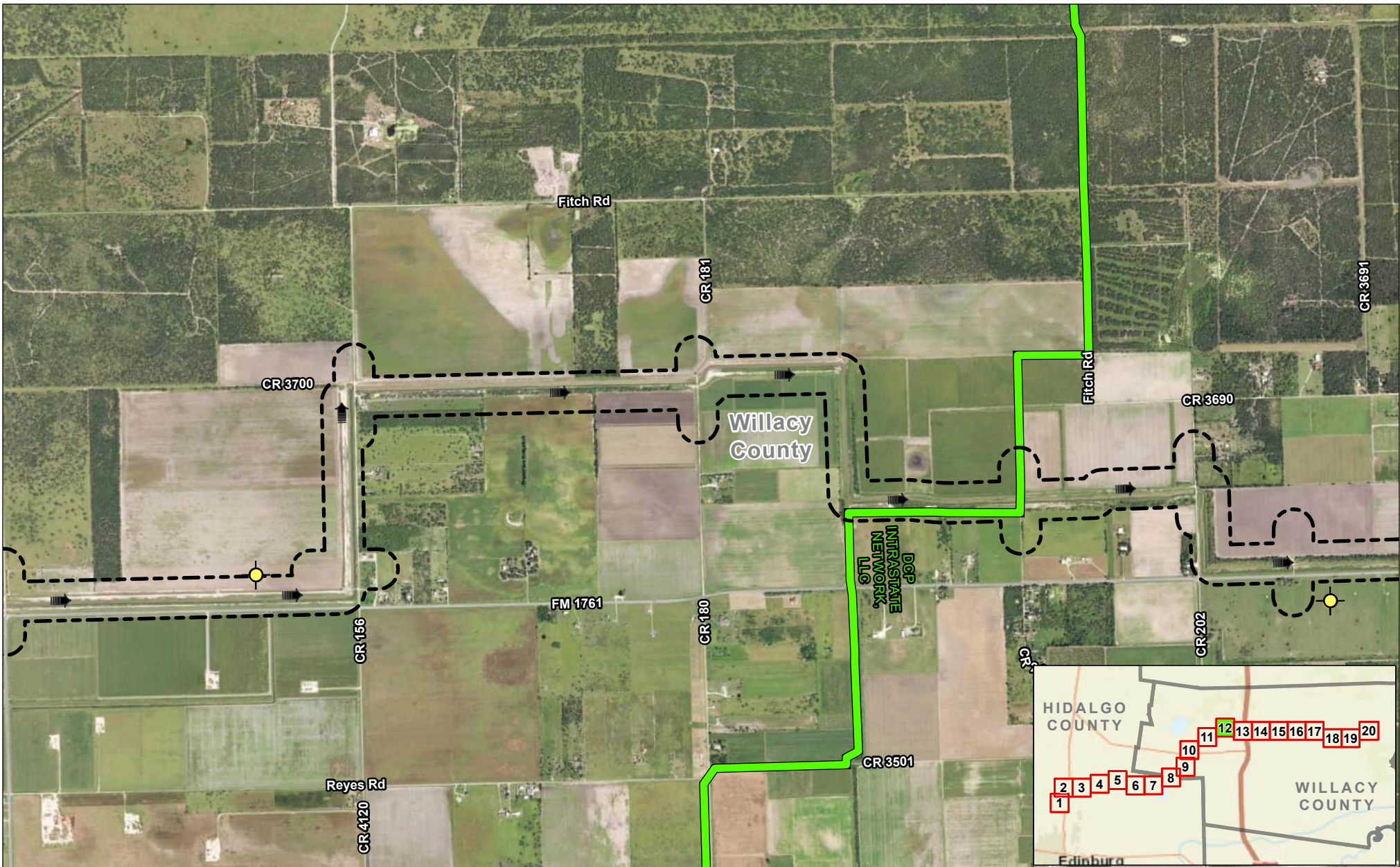


Exhibit 16
Alternative 2 Oil & Gas
Wells and Pipeline Map
Sheet 11 of 20
Raymondville Drain Project

Author : Joel F. Aguirre Updated : 10/5/2023
 DISCLAIMER: RRP Consulting Engineers makes no guarantees as to the accuracy of data used in the construction of this map.



Legend:

- Drain Flow
- Study Corridor
- Natural Gas Pipeline
- Dry Hole Well

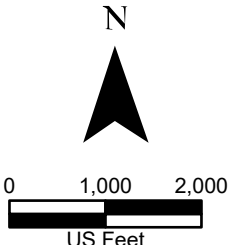
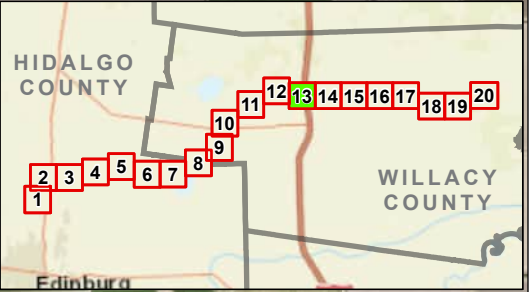


Exhibit 16
Alternative 2 Oil & Gas
Wells and Pipeline Map
Sheet 12 of 20
Raymondville Drain Project

Author : Joel F. Aguirre Updated : 10/5/2023
 DISCLAIMER: RRP Consulting Engineers makes no guarantees as to the accuracy of data used in the construction of this map.



Legend:

- Drain Flow
- Study Corridor
- Natural Gas Pipeline
- Dry Hole Well

N

0 1,000 2,000
US Feet

HIDALGO COUNTY
WILLACY COUNTY

TX

Exhibit 16 Alternative 2 Oil & Gas Wells and Pipeline Map Sheet 13 of 20 Raymondville Drain Project

Author : Joel F. Aguirre Updated : 10/5/2023

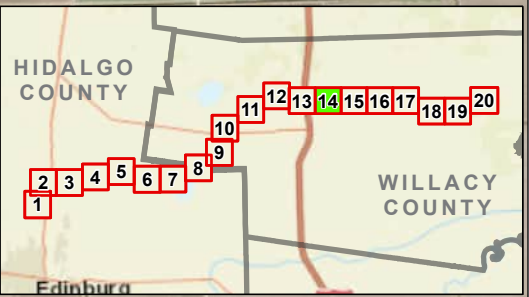
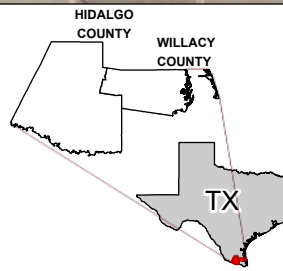
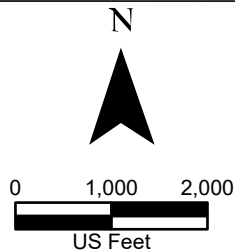
DISCLAIMER: RRP Consulting Engineers makes no guarantees as to the accuracy of data used in the construction of this map.

Path: S:\projects\4408000_ProposedRaymondvilleDrain\Drawings\Drawings.dwg



Legend:

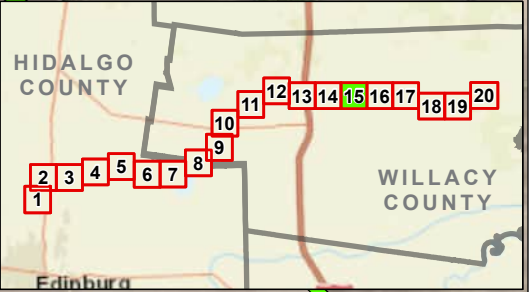
- Drain Flow
- Study Corridor
- Natural Gas Pipeline



**Exhibit 16
Alternative 2 Oil & Gas
Wells and Pipeline Map
Sheet 14 of 20
Raymondville Drain Project**

Author : Joel F. Aguirre Updated : 10/5/2023

DISCLAIMER: RRP Consulting Engineers makes no guarantees as to the accuracy of data used in the construction of this map.



Legend:

- Drain Flow
- Study Corridor
- Natural Gas Pipeline
- Dry Hole Well

N

0 1,000 2,000

US Feet

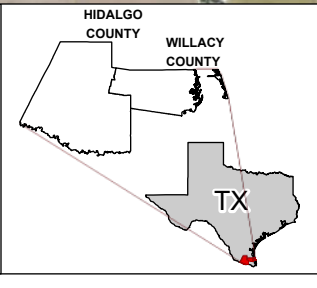
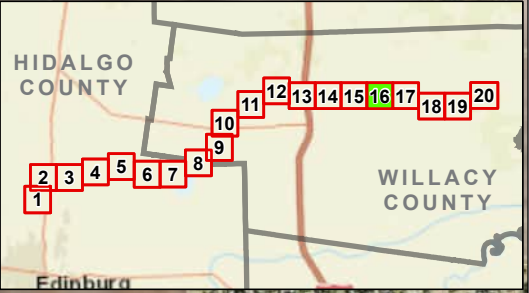


Exhibit 16
Alternative 2 Oil & Gas
Wells and Pipeline Map
Sheet 15 of 20
Raymondville Drain Project





Author : Joel F. Aguirre Updated : 10/5/2023

DISCLAIMER: RRP Consulting Engineers makes no guarantees as to the accuracy of data used in the construction of this map.


Path: S:\project\3408000_Pipeline\GIS\PDF_Export\Exhibit_15_Series.aprx



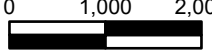
Legend:

-  Drain Flow
-  Study Corridor
-  Natural Gas Pipeline
-  Dry Hole Well

N



0 1,000 2,000



US Feet



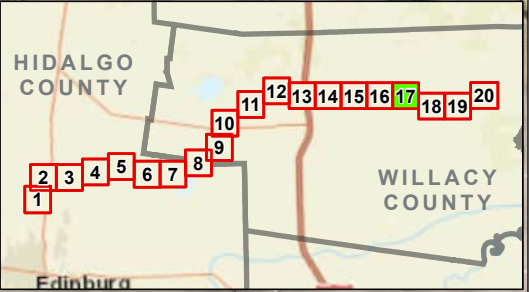


Exhibit 16
Alternative 2 Oil & Gas
Wells and Pipeline Map
Sheet 16 of 20
Raymondville Drain Project




Author : Joel F. Aguirre Updated : 10/5/2023

DISCLAIMER: RRP Consulting Engineers makes no guarantees as to the accuracy of data used in the construction of this map.


Path: S:\projects\4408000_PipelineInventory\GIS\PDF_Export\Exhibit_Series.aprx



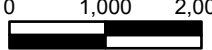
Legend:

 Drain Flow
 Study Corridor
 Dry Hole Well

N



0 1,000 2,000



US Feet



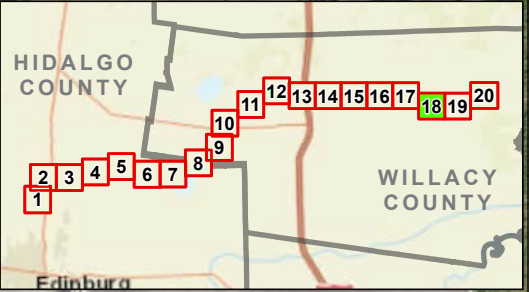


Exhibit 16
Alternative 2 Oil & Gas
Wells and Pipeline Map
Sheet 17 of 20
Raymondville Drain Project



Author : Joel F. Aguirre	Updated : 10/5/2023
---------------------------------	----------------------------

DISCLAIMER: RRP Consulting Engineers makes no guarantees as to the accuracy of data used in the construction of this map.


Path: S:\project\4408000_ProjectRepository\GIS\FOP_Encls-Encl_Series.aprx



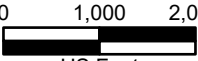
Legend:

-  Drain Flow
-  Study Corridor


N



0 1,000 2,000



US Feet



HIDALGO COUNTY
WILLACY COUNTY
TX

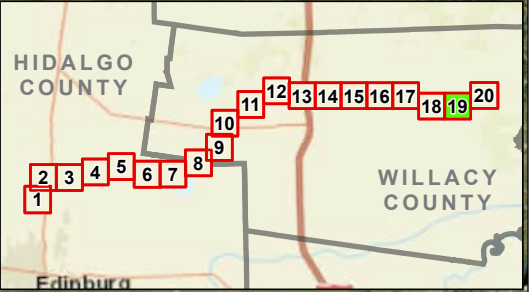



Exhibit 16
Alternative 2 Oil & Gas
Wells and Pipeline Map
Sheet 18 of 20
Raymondville Drain Project




Author : Joel F. Aguirre Updated : 10/5/2023

DISCLAIMER: RRP Consulting Engineers makes no guarantees as to the accuracy of data used in the construction of this map.


Path: S:\projects\4108000_ProjectRaymondville\GIS\PDF_Books\Exh_Series.aprx



Legend:

 Drain Flow
 Study Corridor
 Dry Hole Well

N



0 1,000 2,000
US Feet

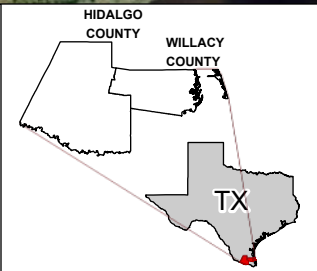


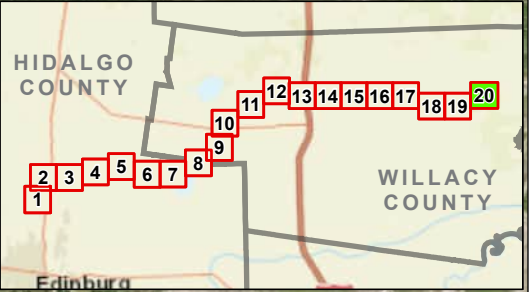


Exhibit 16
Alternative 2 Oil & Gas
Wells and Pipeline Map
Sheet 19 of 20
Raymondville Drain Project




Author : Joel F. Aguirre Updated : 10/5/2023

DISCLAIMER: RRP Consulting Engineers makes no guarantees as to the accuracy of data used in the construction of this map.


Path: S:\project\4108000_Prop\Repository\GIS\FOP_Encls-Encl_Series.apx



Legend:

 Drain Flow
 Study Corridor
 Dry Hole Well

N



0 1,000 2,000
US Feet

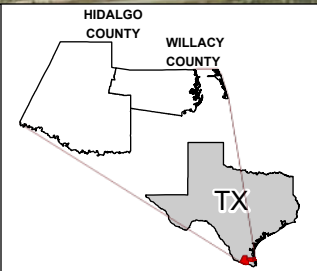




Exhibit 16
Alternative 2 Oil & Gas
Wells and Pipeline Map
Sheet 20 of 20
Raymondville Drain Project

Author : Joel F. Aguirre Updated : 10/5/2023
DISCLAIMER: RRP Consulting Engineers makes no guarantees as to the accuracy of data used in the construction of this map.

Path: S:\project\4408000_Prop\Inventory\GIS\FOP_EndtoEnd_Series.aprx